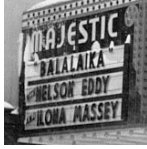


### Reading Photographs: Snow Day



*How carefully do you look at photos? Often, photographs and other visual primary sources come with captions that say when they were created and what they portray. But what if a picture isn't captioned? How can you figure out its date?*

*Examine the photo below carefully. (Download a larger version of the photo at [http://teachinghistory.org/system/files/snow\\_photo\\_0.pdf](http://teachinghistory.org/system/files/snow_photo_0.pdf).) Then answer these questions about what you see.*



1. What type of building takes up most of the photograph?
  - Grocery store
  - Movie theater
  - Gas station and garage
  - Bookstore

Source: <http://teachinghistory.org/history-content/quiz/25270>

2. What do you see in the building's lower windows?
  - Movie posters
  - Recruiting posters
  - Concert posters
  - Advertisements for personal electronics
3. What is the vehicle in the left-hand corner of the photo?
  - Horse-drawn carriage
  - Ford Model T
  - Car from the 21st century
  - Car from the middle of the 20th century
4. What type of photo is this?
  - Black and white
  - Daguerrotype
  - Color
  - Cyanotype

Source: <http://teachinghistory.org/history-content/quiz/25108>